

## PM70V2 IP Video Wall Controller System

HDMI & IP Cam input & 2/4/16/48ch HDMI output



### Innovation

As IP products become more mainstream, several partners are looking for a video wall controller/matrix combination allowing for an easy way to display and operate IP cameras and IP PTZs.

Simplicity of operation is the key and the ability to call a camera into a selected pane or window on video screen was the goal in developing this IP matrix switcher.

The command structure is simple: (1) (CAM) + (1) (MON) on the IP keyboard/PTZ controller allows the users to switch camera 1 to Monitor 1, while the joystick allows for precise operation of the PTZ.

This was the idea behind the development of the PM70V2 ip matrix: the IP PTZ is operated much like a typical Analog PTZ system with each PTZ being assigned an IP address on the network switch and the communication path/language is over ip protocol.



Stand-alone configuration 2ch HDMI output



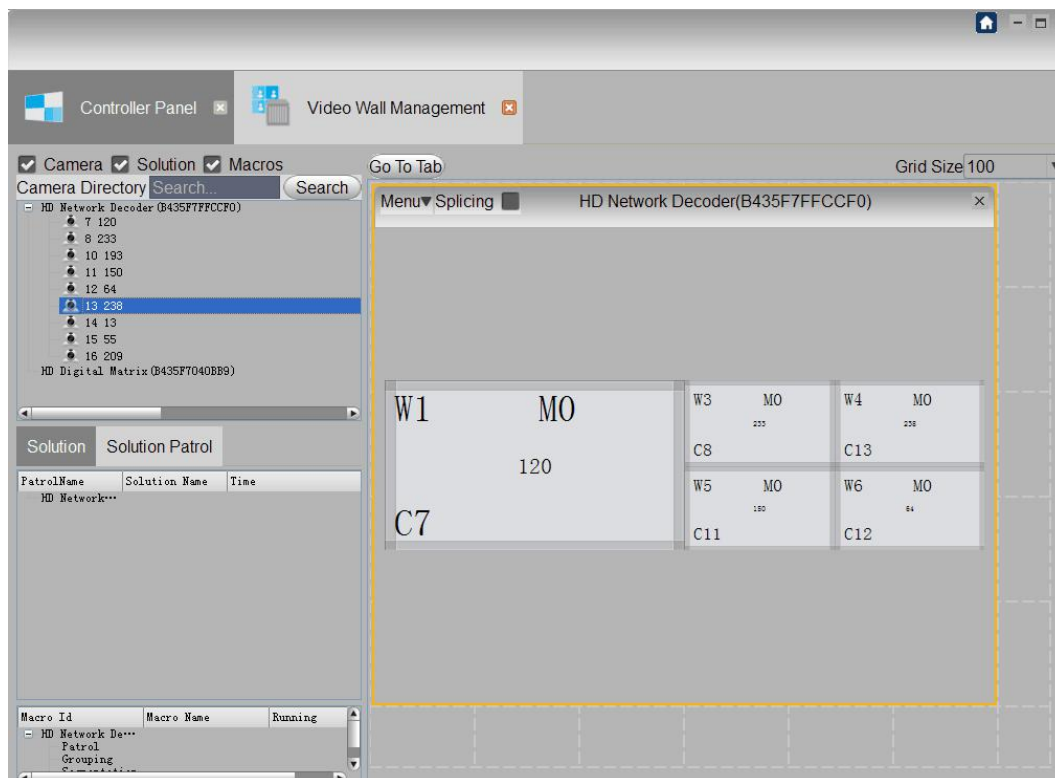
1.5RU chassis with 4ch HDMI output cards

## Product Feature

- ◆ Support for network media, ONVIF, RTSP data input
- ◆ Support computer keyboard & Mouse direct input, U Flash storage.
- ◆ Support BNC input, HDMI input, HDMI input support 4K.
- ◆ Modular design, 8 card slots in one 4RU chassis,
- ◆ Each card can support 2ch HDMI output, every odd output support 4K output, one chassis can connect up to 48ch HDMI outputs
- ◆ Each Video Output can identify optimum resolution automatically, or allow the user to change the output resolution manually. Maximum supported resolution per card 3840x2160@60Hz.
- ◆ Support 4K, 1080P, 1080I, 720P, D1 video formats
- ◆ Support standard H.265, H.264, MPEG4
- ◆ Single module support 4ch at 4K or 16ch at 1080P or 32ch at 720P decoding and display.
- ◆ Support video-splitting output, or 5x5 windows maximum on one monitor
- ◆ Support monitor splicing by any size ,splitting, windowing, zooming in & out
- ◆ Support audio input and output, also monitoring, broadcasting and intercom functions are supported
- ◆ Support OSD, title, time and warning messages can overlap on the displayed video
- ◆ Compatible with branded IPC without use of streaming media server

## Net client software

Allows the user to graphically configure the Video wall and discover the IP cameras present on the local area network.



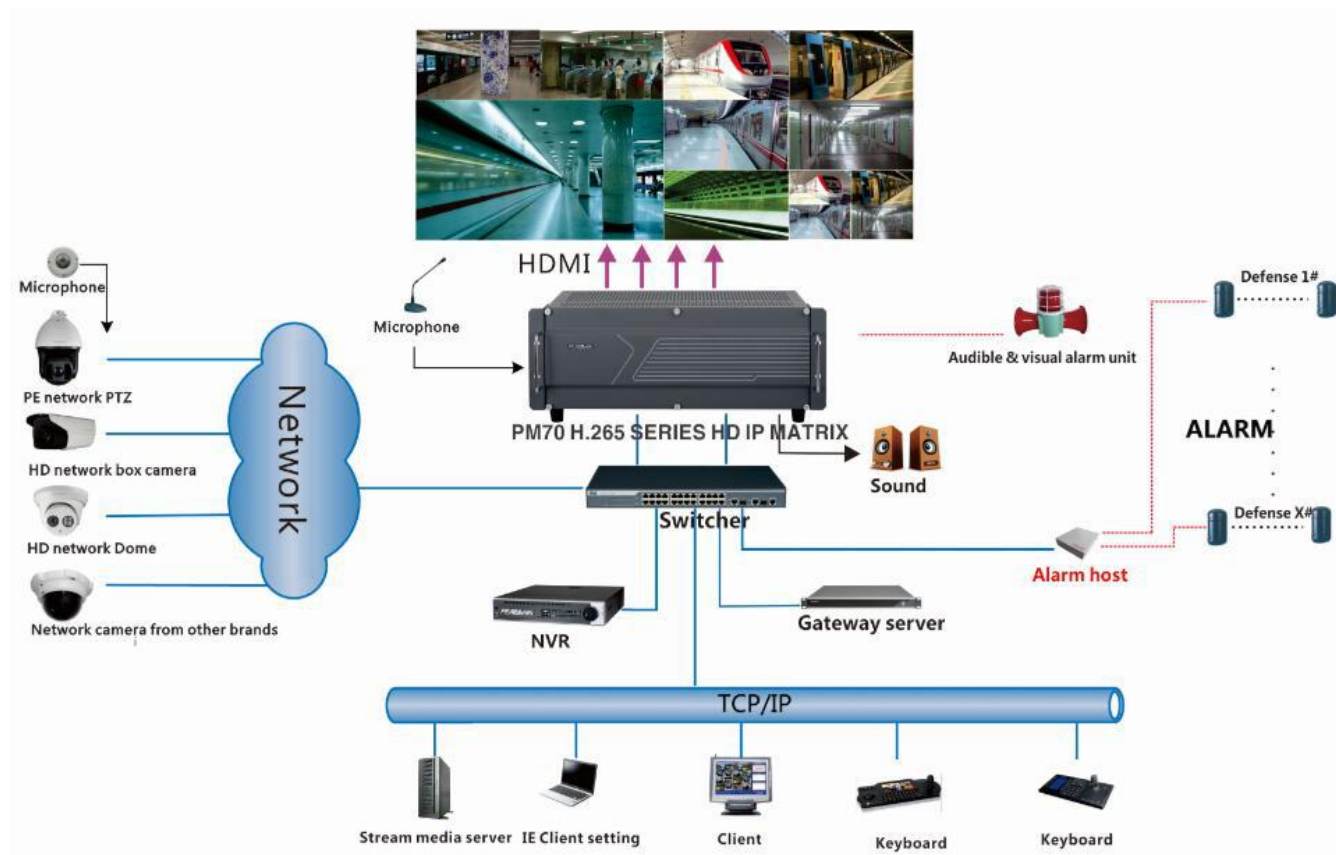
## Specifications

Interface Parameter	
HDMI input	1CH HDMI input per card, support 4K video input
BNC input	8CH BNC input per card, support analog, TVI,CVI,AHD
HDMI output	2CH per card, odd port support 4K output
Ethernet	100M/1000M adaptive RJ45 port
Audio input	1ch ,Φ3.5 earphone socket .
Audio output	1ch ,Φ3.5 earphone socket .
alarm output	support (rack construction)
USB2.0	support
RS232	support
Video Parameter	
network video decoding	H.265, H.264, MPEG4
network video input	4K, 1080P, 1080I, 720P, D1
HDMI output resolution	1024×768P@60Hz,1280×720P@60Hz, 1366×768P@60Hz,1920×1080P@60Hz, 3840×2160@60Hz
video decode and display	one module support 4CH 4K or 16ch 1080P@30hz or 32ch 720P or 64ch D1
monitor splicing	48 monitor splicing( rack construction)
monitor splitting and display	Support 4/9/16/25 splitting and display
OSD	Supports Chinese/English OSD character superposition; Time display, Monitor No. display. Support titles overlaying, Maximum 16 titles overlay in one screen, maximum 40 characters per title; Alarm information display.;
Audio Codec	G.711,G.726,ADPCM Audio encode/decode.
On/Mute	Supports all channels and single channel quick setting individually.
Audio input	one module support 1CH audio encode, it can be set to open/close audio input.
Management and Maintenance	
Basic function	Multi-user login/logout, Maximum supports 72 users online at same time, operation permission definition; Supports video switching and controlling. Support Segmentation display mode management. Automatic inspection, setting and call. Supports rollback playing.

## IP Matrix switcher system

System management and configuration	PETNET protocol available, support web configure, configuration upload and reload, operation permission setting and management
Maintenance	system log available. Fault detection and report. support online updating.
Other	
time synchronization	interior RTC, it could time automatic synchronization, offer standard port, to keep sync. To time server inside the system.
alarm input	support network alarm input
alarm output	one module can provide with 1CH alarm switching value output and network alarm output
Alarm Processing	Multiple alarm event processing mode
Screen control	video screen control port available;
best resolution identification	support best resolution identification
power supply	one module Power supply: DC 12V chassis power supply: AC 220
Power consumption	one module 15W
working temperature	0~55℃
working humidity	10%~90%;
structure	standard structure design

System Topology



Dimensions



19.37"x6.14"x9.76" (492x156x248mm)