

PE50S series Modular Network Matrix switcher system

Microprocessor-Based Switcher/Controller, 50,000 Inputs, 512 Outputs

Product Feature

- Microprocessor-Based, Full Cross-Point Video Matrix
- Modularization Design Supports Up To 256 Cameras And 32 Monitors In Each Bay
- Control Up To 50,000 Cameras And 512 Monitors On Base Of System Extension.
- User Manual And Quick-Guides Provide System Wiring And Configuration Details
- UTP,RS-422 COM Ports,RS-232 Full-Duplex Ports Available On The CPU
- System Diagnostic Leds Displayed On Front Panel
- Logical Camera Selection And Priority Level Operation & Configuration In Matrix Software
- Multiplexer And DVR Control Using The Keyboard
- Built-In Video Loss Detection
- Windows-Based System Management Software, Includes Multilingual Menus And On-Screen Help
- Factory Tested Prepackaged System Configuration And Quick-Guide Manual.
- Including ASCII Data, DVR, PTZ, Network, Etc. Protocol
- Powerful Macro Programming
- Can Communicate With Other Popular Matrix Switcher
- Can Communicate With optional DVRs
- Network for communication singal

Optional Accessories

- Built-Out Redundant dual CPU or Dual CPU
- Redundant dual Power Supply Unit
- Responds to 50,000 Alarms by external PE5140 series alarm interface unit
- Audio matrix



Developping on base of PE50M & PE60 modular matrix, PE50S is a full-featured modular matrix system that allows users to view and control up to 256 cameras and 32 monitors on one matrix bay. Up to 255 individual user-defined ID numbers can be assigned to allow or deny access to system functions.

it could integrate with DVR, Video server etc. to generate a composite system.

Redundant Dual CPU & Dual power supply unit for double guarantee.

The base configuration of PE50S matrix consist of Matrix bay, CPU module, video input module, video output module and keyboard controller, Optional modules can be added to enhance system capabilities.

Preconfigured systems make installation fast and simple. The PE50S furnishes a PE5060S user-friendly Windows-based management system, which allows for easy system programming and maintenance.

Marco simple keyboard operation, just to define one button to run complicate code

CPU Built-in video loss detection and system diagnostic features, icon and LEDs will indicate information to operators.



Function description

Powerful NETWORK function

PE50S unify codes to all sources in its system, takes arbitrary network topology structure, matrix Net level and matrix bay number in its system is limitless.

Much larger scale of the system

every video input module board (PE50SVIM) is 32ch, every video output module (PE50SVOM) is 8ch, up to 256ch inputs & 32ch outputs for one PE50S matrix bay, it can extend up to 65535ch inputs and 512ch outputs.

Flexible configurations

Using industrial chipset and modular & integrated design, system configuration is flexible, easy to extend system scale by adding new matrix bay and module boards.

Flexible configurations

Using industrial chipset and modular & integrated design, system configuration is flexible, easy to extend system scale by adding new matrix bay and module boards.

Dual CPU & Dual Power Supply Unit to offer special support on stability

PE50S can have external Dual CPU and Dual power supply, plug & play, which offers special support on system stability



External Dual CPU



Dual Power Supply unit

Perfect Compatibility

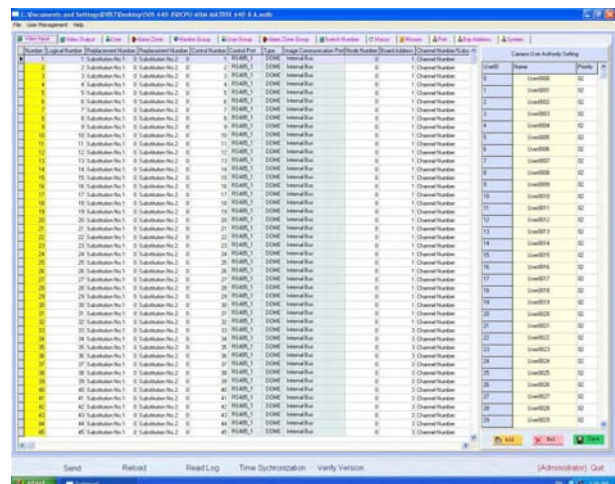
On base of project practice and continuous Research & development, PE50S can compatible with popular Matrix and receiver/driver from other manufacturers, can communicate with other manufacturers' matrix and program it.

Personalized programming

Besides usual matrix function, such as control function to pan-tilt, lens, light, recorder, browser/fan, alarm linkage etc. PE50S can program personalization according to practice, it can integrate video surveillance, access control, fire control, GIS, video conference etc. in same platform, its applications can cover from the traditional security surveillance to whole intelligent integration solutions.

Windows-Based System Management Software

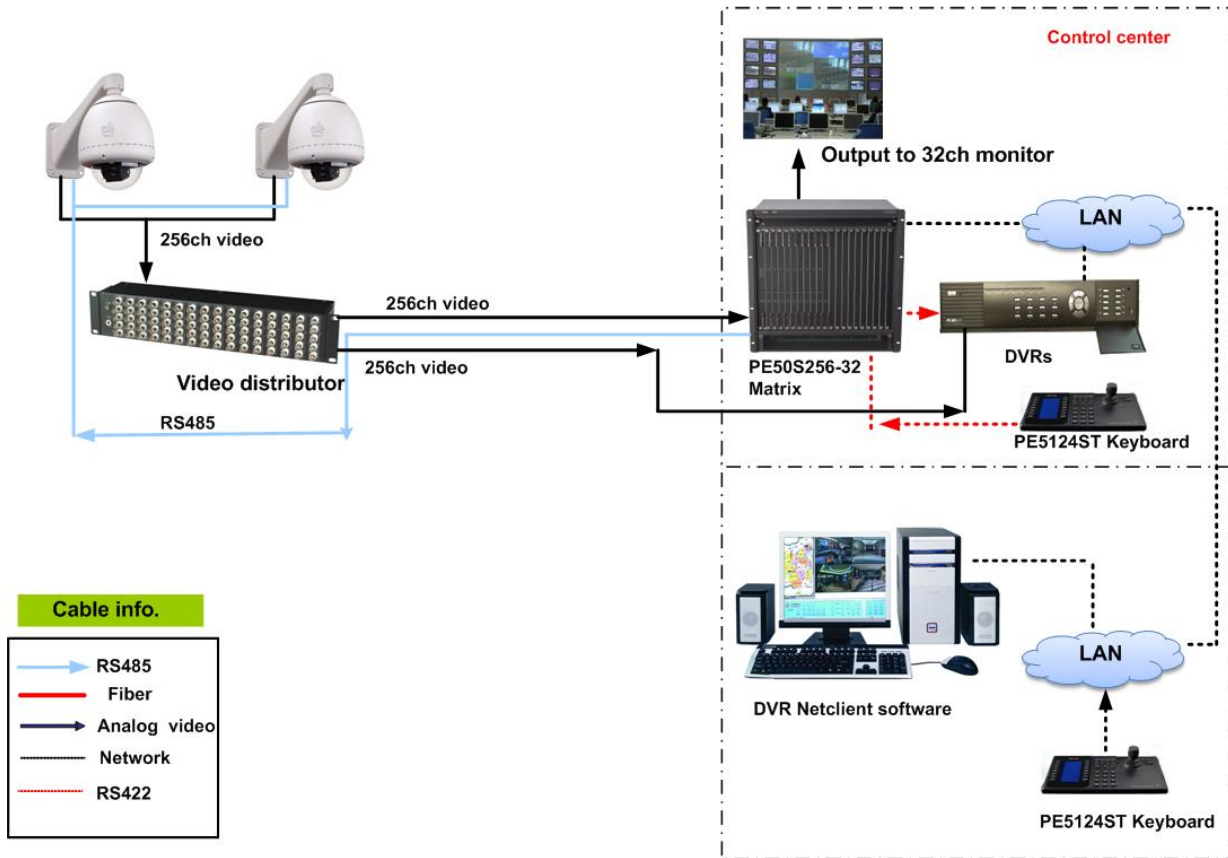
Every PE50S will furnish one PE5060S window based system management software, it can set including protocol, alarm, video input & output, monitor, user authorization, etc.



Specifications

Communication	
Communication	RS-422, RS-485, RS-232, TCP/IP
Baud rate	19200 bits/s、 9600 bits/s、 4800 bits/s、 2400 bits/s etc.
Interface	RS-422 RJ45 connector (full duplex) RS-232 RJ45 connector RS-485 3-pin 3.81 connector (semi-duplex)
System configuration	
System User	255
System capacity	Main matrix bay: 256ch inputs/ 32ch outputs Maximum input: 304ch inputs / 8ch outputs Maximum after extension: 50000ch outputs / 512ch outputs Logic encoding value: 999999 inputs / 2048 outputs
Alarm capacity	50000
On-screen display	Camera title: 32 english character Full screen: 16 lines, 42 row english character
Character	Chinese/ English / Latin / Cyrillic
Power-off memory time	10 year
Video	
Video input	1Vp-p/75Ω Composite signal
Video output	1Vp-p/75Ω Composite signal
Signal to noise ratio	>60dB (unweighted) >70dB (weighted)
Channel bandwidth	5Hz~8MHz (1Vp-p with filter) 20MHz (1Vp-p , -3dB without filter) 65MHz (20mVp-p , -3dB without filter)
Insertion gain	<0.2dB
Differential gain	<1.0%
Differential phase	< 1.1°
Amplitude-frequency characteristics	< 1.0dB (5.8MHz)
Adjacent Channel Crosstalk	< -55dB (PAL: 4.43MHz/NTSC: 3.58MHz)
Adjacent channel isolation	> 50dB (PAL: 4.43MHz/NTSC: 3.58MHz)
Line Time Waveform Distortion	< 1.0%
Typical switching time	20ms (Typical)
Electrical Characteristics	
Power Supply	100~240VAC 50/60Hz Adaptive
Power consumption	80W
Mechanical Specifications	
Weight	27KG (Full capacity)
Installation dimension	430mm(Width)×222.5mm(Depth)×356mm(8U) height
Rack	19" EIA standard chassis
Environmental specifications	
Operating temperature	-10~+55℃
Operating Humidity	0~90%RH (No condensation)

Diagram



Dimension:

